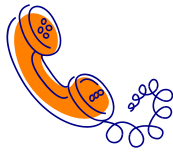


Reporting and Recording Incidents



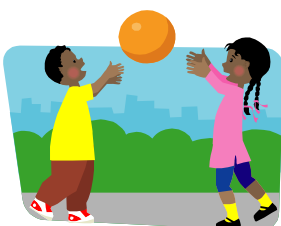
If you have concerns that your child may be experiencing bullying behaviour, please contact the Head Teacher or a member of the school management team in order for us to work together to address this as quickly as possible.

Who should implement the Policy?

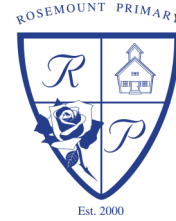
This should be the responsibility of everyone associated withSchool.

This includes

- School management team
- Teachers and support staff
- Pupils
- Parents / carers
- External / outside agencies
- Local community



Rosemount Primary Anti-Bullying Policy



Purpose:

The purpose of this policy is to provide guidance for our school community on the processes and procedures to prevent and address bullying behaviour.

Principles which Underpin the Policy




- 'Every pupil has a right to work and learn in an atmosphere that is free from victimisation and fear'
- 'Children have the right to protection from all forms of violence (physical or mental).'
- All forms of bullying behaviour are unacceptable
- All relationships within our school community should be based on mutual respect
- A positive school ethos is essential to the creation of an anti-bullying culture



What is Bullying Behaviour?

There are many different definitions of bullying behaviour. It can be offensive, abusive, intimidating, malicious or insulting behaviour. It is an abuse of power or authority, which can undermine an individual or a group contributing to unhappiness, anxiety and stress. The impact of bullying behaviour is a major barrier to learning. It is not a normal part of growing up.

Bullying Behaviours can be described as

- **verbal** 
- **physical** 
- **cyber** 



Prevention

In order to prevent bullying behaviour a range of strategies are in place within our school.

- Promoting a culture where bullying behaviour is unacceptable
- Adults model positive, respectful behaviour
- Inclusion of anti-bullying messages in all areas of the curriculum
- Promoting and demonstrating appropriate social on-line and mobile technologies behaviour
- Promoting anti-bullying behaviour as the responsibility of all
- Teaching pupils to recognise and report bullying behaviour

Intervention

A range of agencies can support the school in intervening when instances of bullying behaviour can occur.

Methods of intervention can include:-

- Restorative Practices
- Solution Focussed Approaches
- Circle Time
- Circle of Friends
- Consequences₃ linked to school behaviour policy