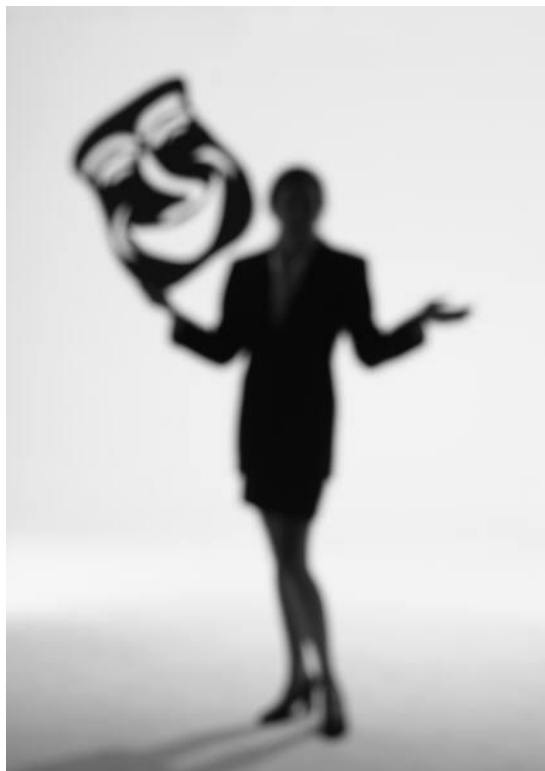


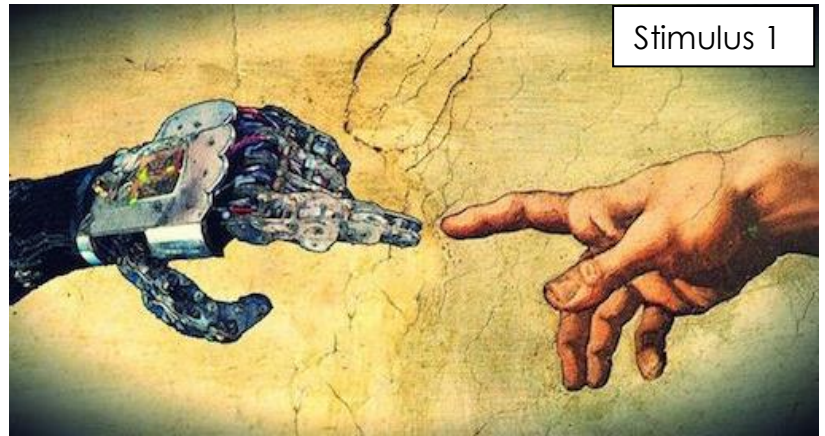
**Forfar Academy  
Drama Department**



**S3 Drama Booklet**

**Name .....**

**Teacher .....**



Stimulus 2

“Tough times never last  
but tough people do”

- Dr Robert  
Schuller

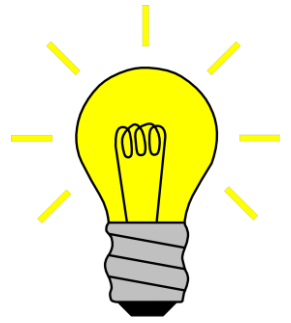


Stimulus 4

*"Everything you've ever wanted is on  
the other side of fear"*

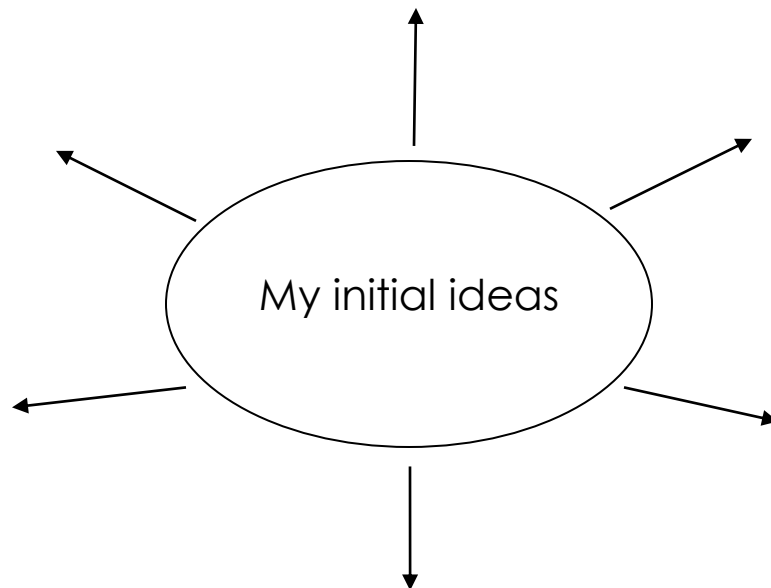
*- George Addair*

# STIMULUS



My group chose stimulus number \_\_\_\_\_

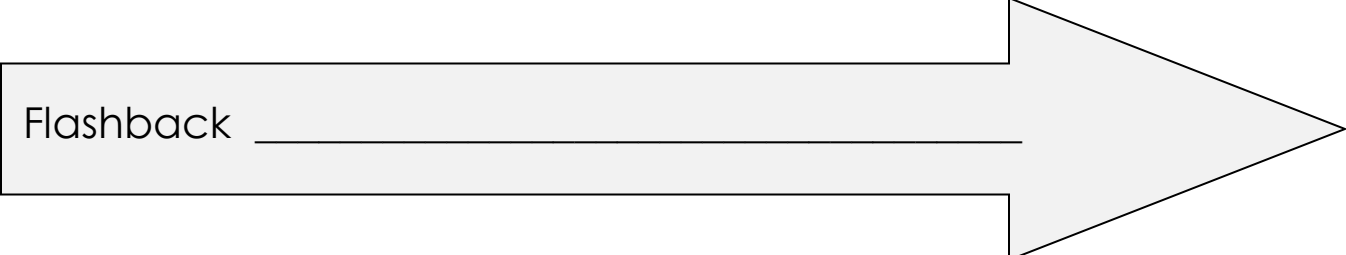
Describe what this Stimulus means to **you** and what it made you think of when you first saw it.



*\*Circle your strongest idea to share with your group\**

# CONVENTIONS

Flashback \_\_\_\_\_



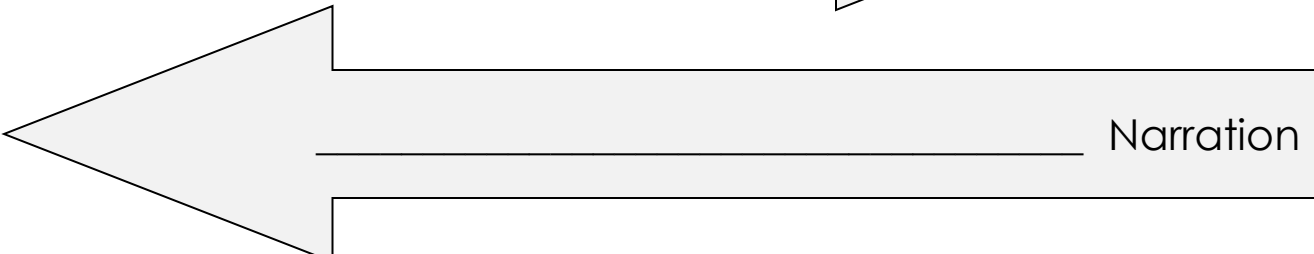
FlashForward



Slow Motion \_\_\_\_\_



Narration



Split Stage \_\_\_\_\_

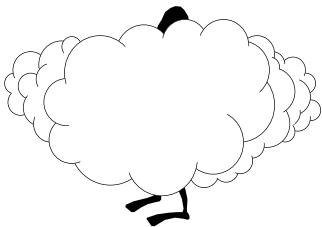


We have chosen to include the following convention \_\_\_\_\_

We have chosen this because \_\_\_\_\_

\_\_\_\_\_

# SCENARIO

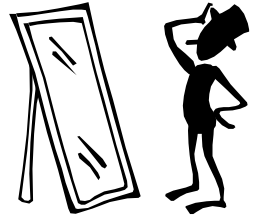


Use the space below to write a **brief scenario** of the drama you have created:

Scene No.	Time/ Date	Place (Where the scene is)	Action (What happens in the scene)
1			
2			
3			

# CHARACTER CARD

---



Write a **character card** below. Put in any information you feel is important to know about the character and add as much detail as possible.

**Name:**                      **Age:**                      **Occupation:**

**Physical Description/Appearance:**

**Family Background:**

**Personality:**

**Voice:**

**Movement:**

---

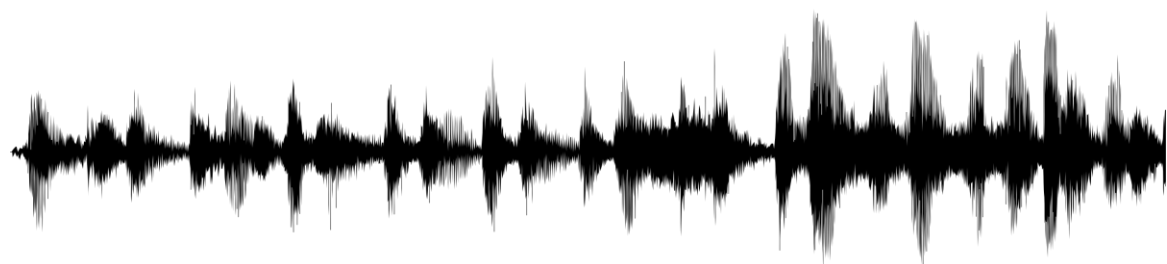
**Additional notes about your character which you feel are relevant:**

# THEATRE ARTS

---

Once you have planned out and rehearsed your performance you will begin adding theatre Arts:

- Props
- Set design
- Costume
- Sound
- Lighting



- Hair and Makeup

## PROPS LIST

---

You should now write any props required in the table below.

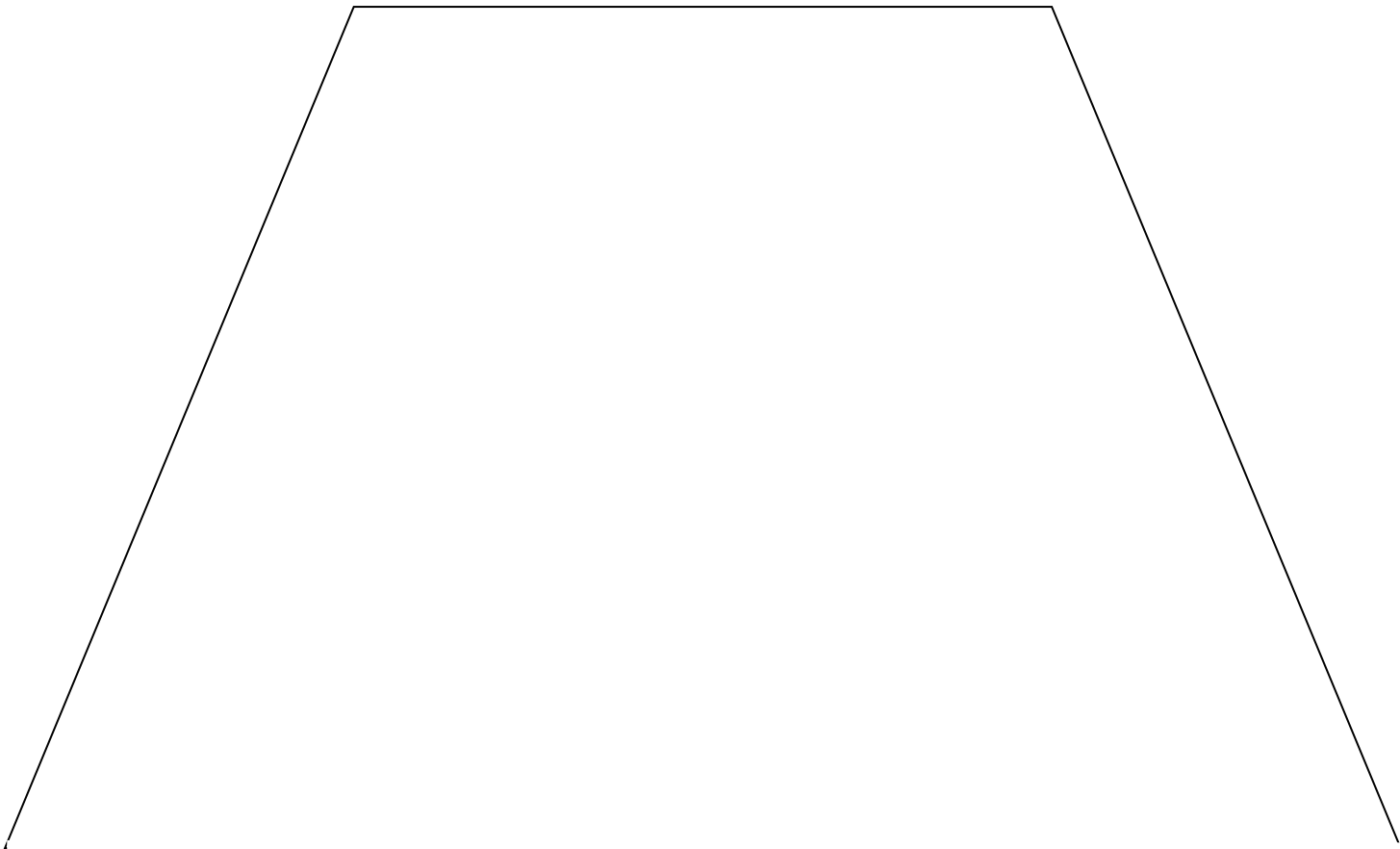
PERSONAL PROPS	HAND PROPS	PRE_SET PROPS




# GROUND PLAN

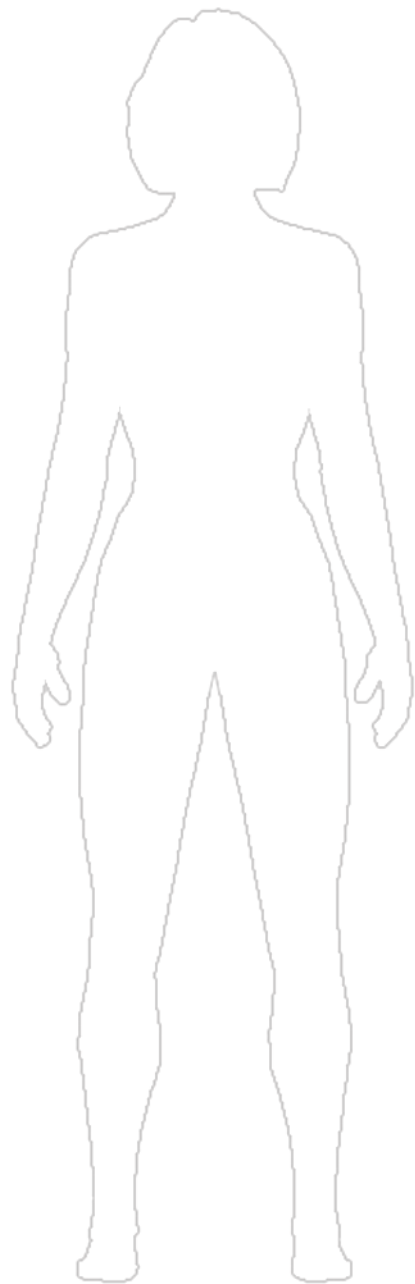
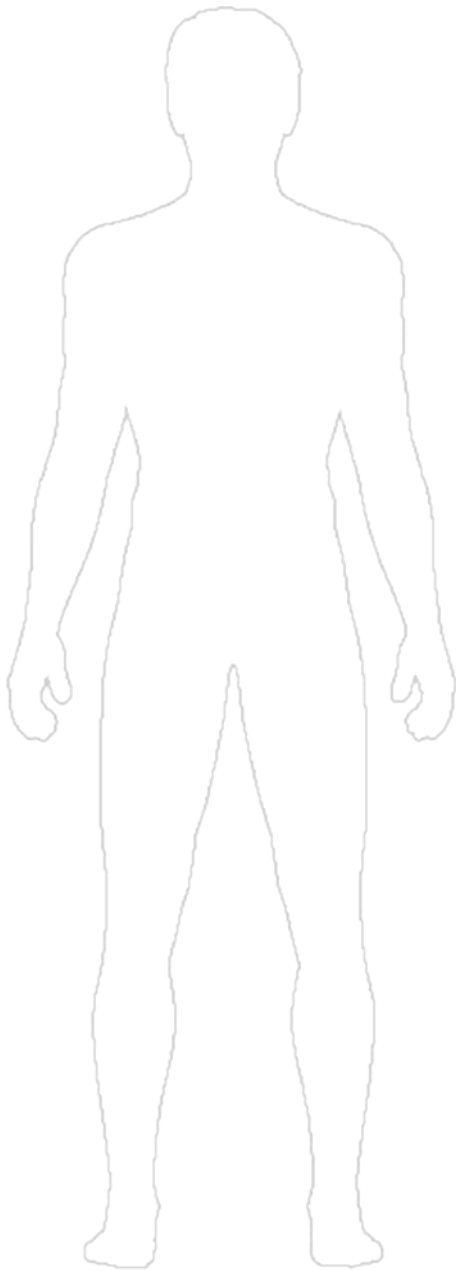
Draw a ground plan in the space below. Remember to use K.A.V.E.S when completing the ground plan.

Scene \_\_\_\_\_



# COSTUME

Now design your character's costume using the appropriate template below. Remember to use colour and label it fully.



## SOUND & LIGHTING

SFX No.	Description of SFX	Cue	Fade In / Out	Level	Duration	Additional Notes

[illegible]

# HAIR & MAKE-UP

Design hair and make-up for a character in your drama.

