

Argyll & Bute Community Planning Partnership

Early Years Collaborative - Family Engagement

Hamish Fraser

Improvement Advisor

Early Years Collaborative

Introductions

- Please introduce yourself to others at your table.
- Talk about what your involvement is with the Early Years Collaborative and improvement projects in Argyll & Bute
- What greater involvement would you like to have?

Early Years Collaborative Aim

To make Scotland the best place in the world to grow up in by improving outcomes, and reducing inequalities, for all babies, children, mothers, fathers and families across Scotland to ensure that all children have the best start in life and are ready to succeed.

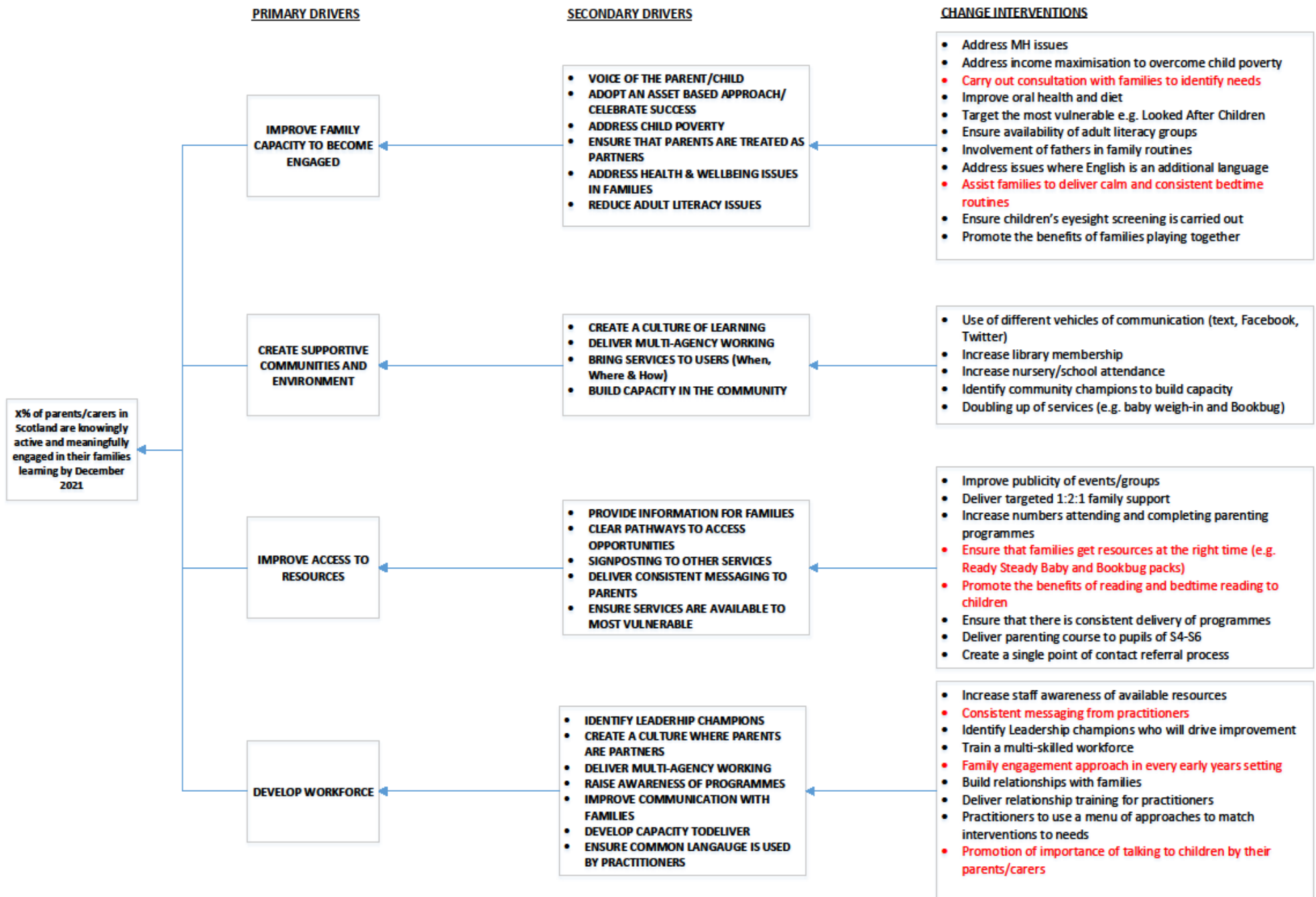
Early Years Collaborative Stretch Aims

1. To ensure that women experience positive pregnancies which result in the birth of more healthy babies as evidenced by a reduction of 15% in the rates of stillbirths (from 4.9 per 1000 births in 2010 to 4.3 per 1000 births in 2015) and infant mortality (from 3.7 per 1000 live births in 2010 to 3.1 per 1000 live births in 2015)
2. To ensure 85% of all children within each Community Planning Partnership have reached all of the expected developmental milestones at the time of the child's 27-30 month child health review by end-2016.
3. To ensure 90% of all children within each Community Planning Partnership have reached all of the expected developmental milestones at the time the child starts primary school, by end-2017.
4. To ensure that 90% of all children in each Community Planning Partnership area have reached all of the expected developmental milestones and learning outcomes by the end of Primary 4, by end-2021.

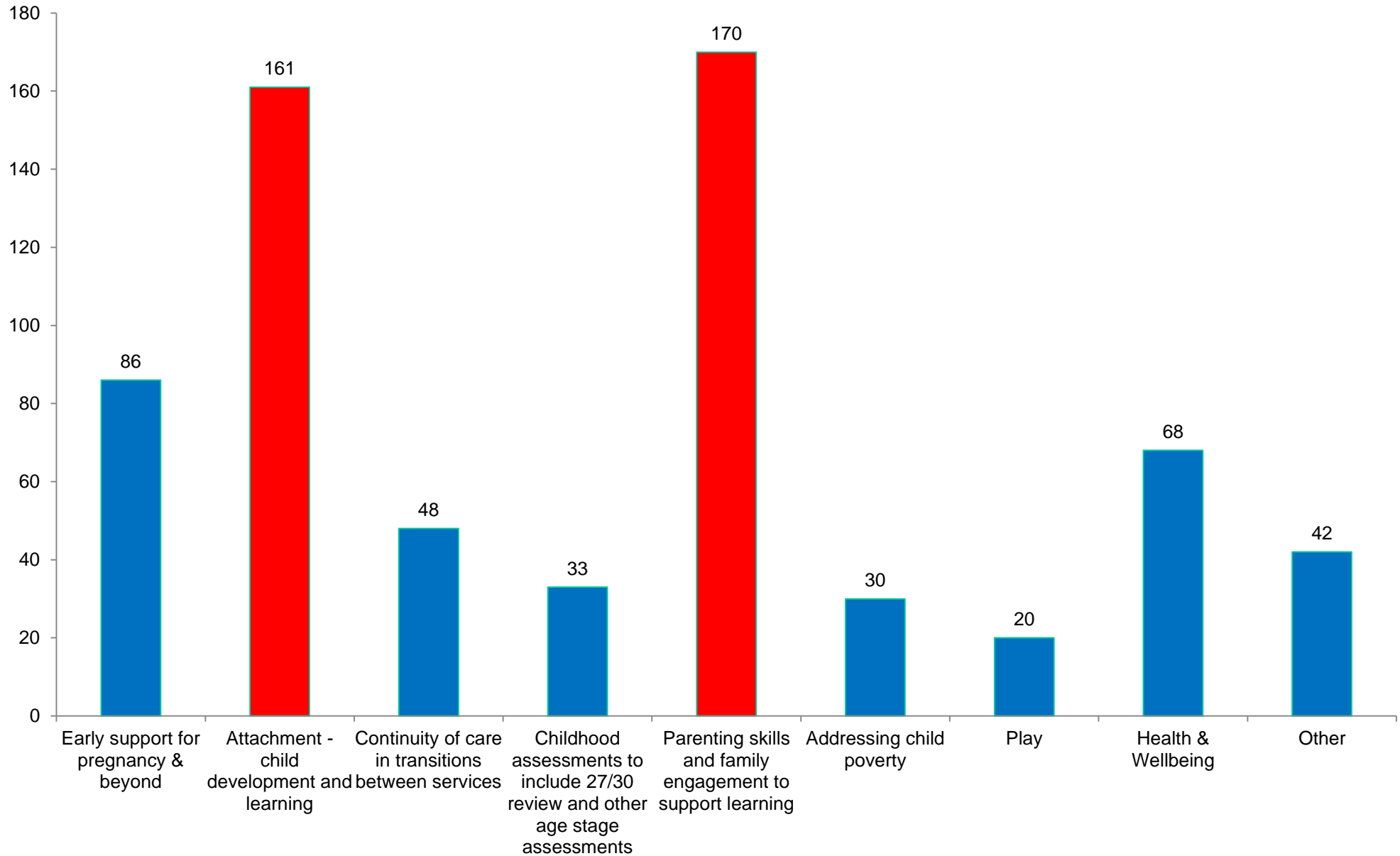
Early Years Collaborative Key Change Themes

- Early support for pregnancy and beyond
- Attachment, child development and learning
- Continuity of care in transitions
- 27-30 month child health review
- Parenting skills and family engagement to support learning
- Addressing child poverty
- Health and Wellbeing
- Play

PARENTING AND FAMILY ENGAGEMENT TO SUPPORT LEARNING DRIVER DIAGRAM (DRAFT)



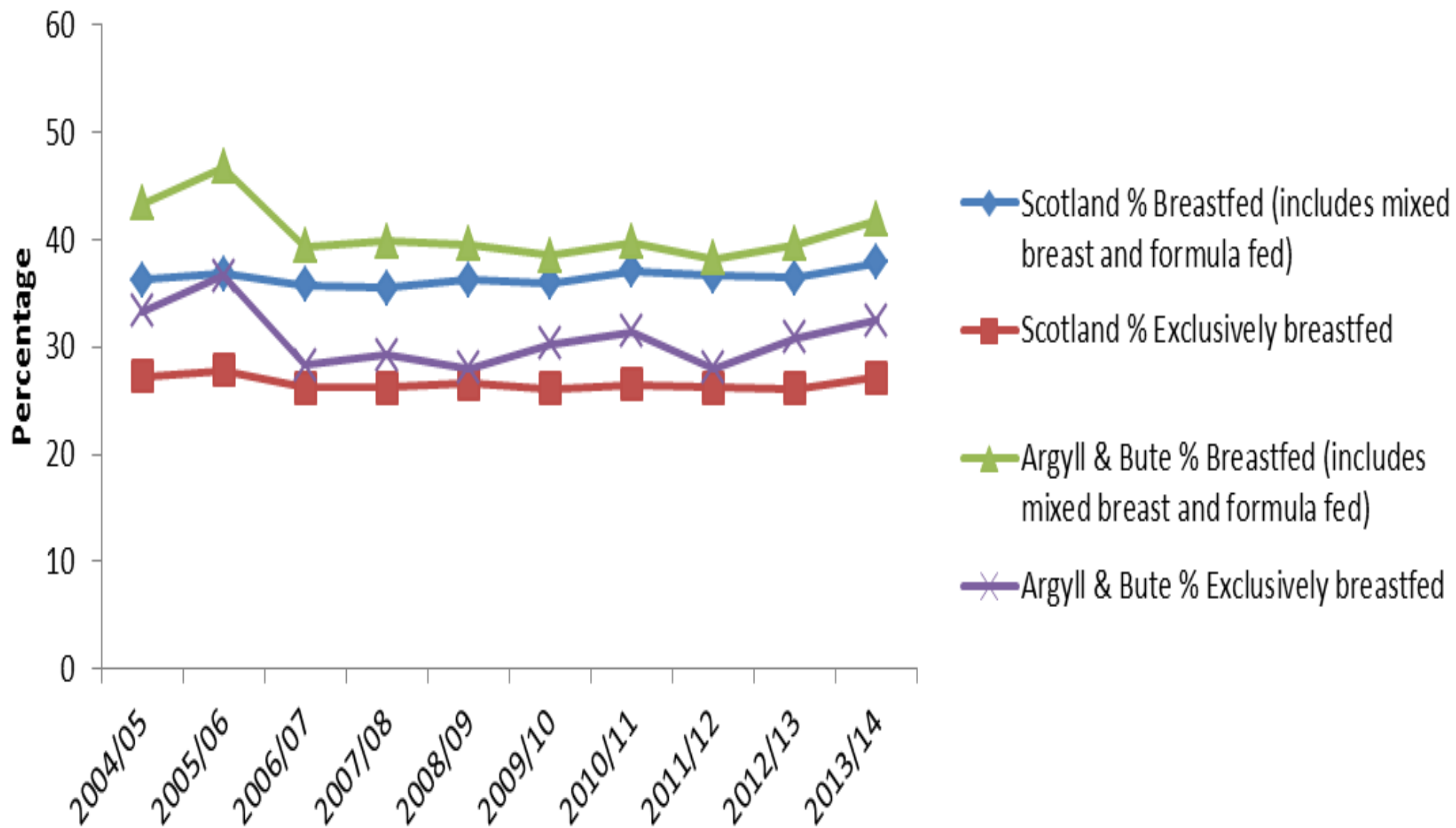
Number of Projects by Key Change Theme



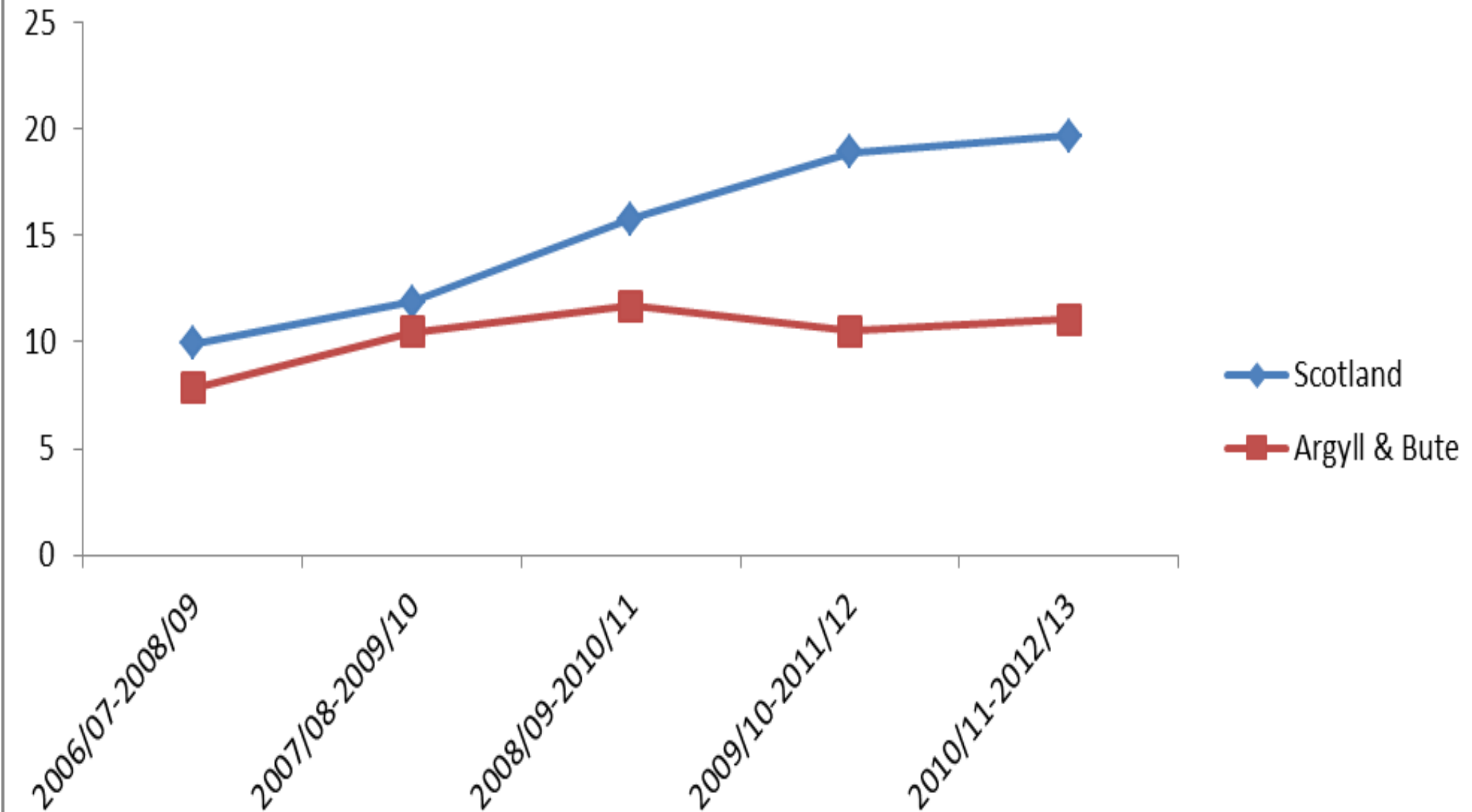
Argyll & Bute CPP Improvement Projects

- Healthy Start vitamins taken during pregnancy
- All women have a signed antenatal plan
- GBV enquiry at 22 weeks gestation and referred to support services if appropriate
- CO monitoring offered to 95% of pregnant women
- 95% of children have a core care plan at 12-15 months
- 95% of children attend 27-30 month Health Review
- All ELCC settings to deliver the PAThS emotional literacy programme
- All ELCC settings to report on developmental milestone progress for each 3 and 4 year old
- All Bookbug Assertive Outreach practitioners to engage and sustain involvement with at least one family

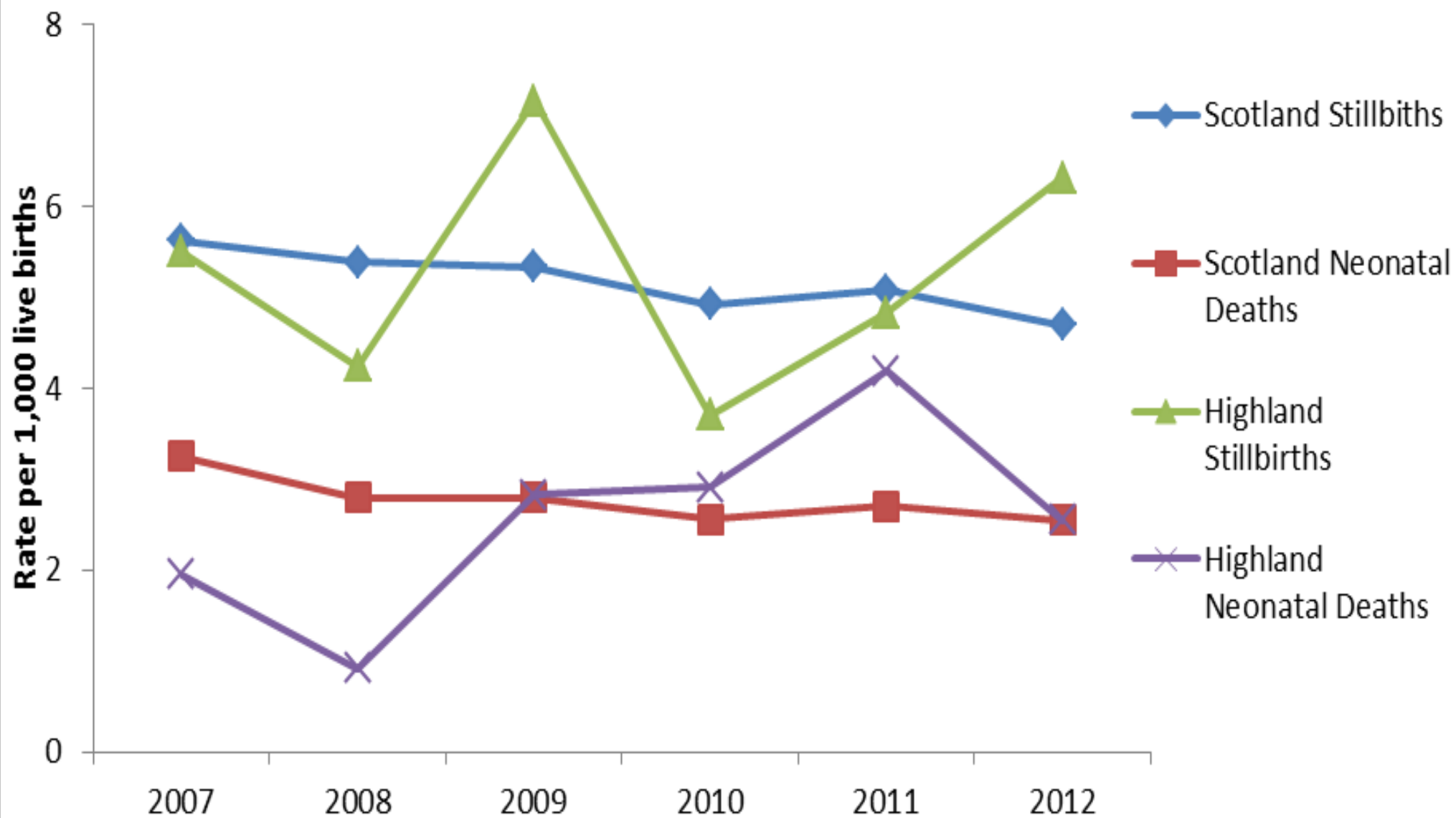
Argyll & Bute Breastfeeding Rates at 6-8 Week Review



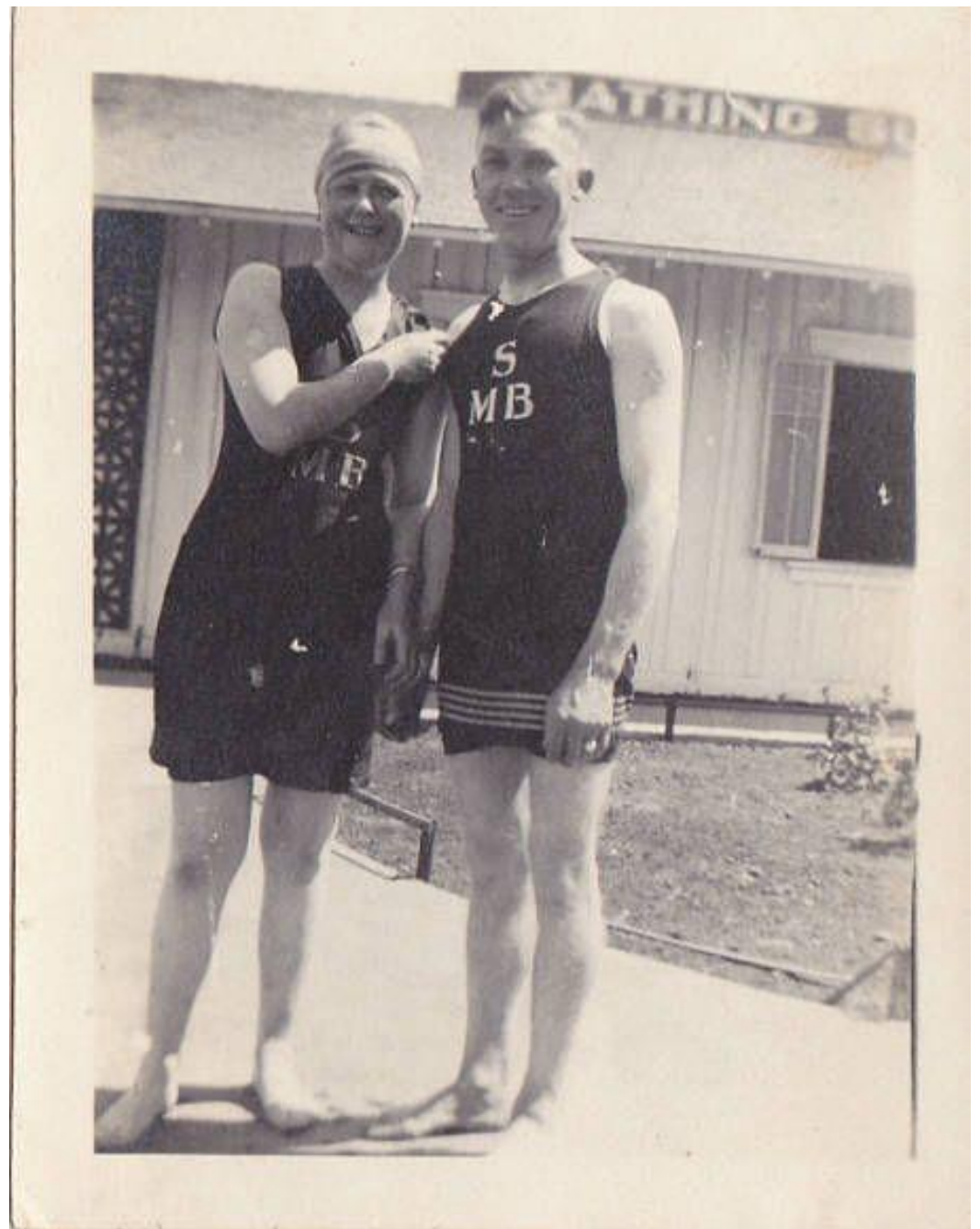
Drug Misuse in Pregnancy - Argyll & Bute



Stillbirths and Neonatal Deaths - NHS Highland



Data is like a swimsuit.
What it reveals can be
interesting but what it
conceals is vital.



I think people have begun to forget how powerful human stories are, exchanging their sense of empathy for a fetishistic fascination with data, networks, patterns, and total information... Really, the data is just part of the story. The human stuff is the main stuff, and the data should enrich it.

Jonathan Harris

<http://www.slideshare.net/amitkaps/fifth-elephant-2014-talk-crafting-visual-stories-with-data?sf3881865=1>

 #SHCR @HelenBevan



or



*“I have some Key
Performance
Indicators
for you”*

*“I have a
dream”*

What's Working!

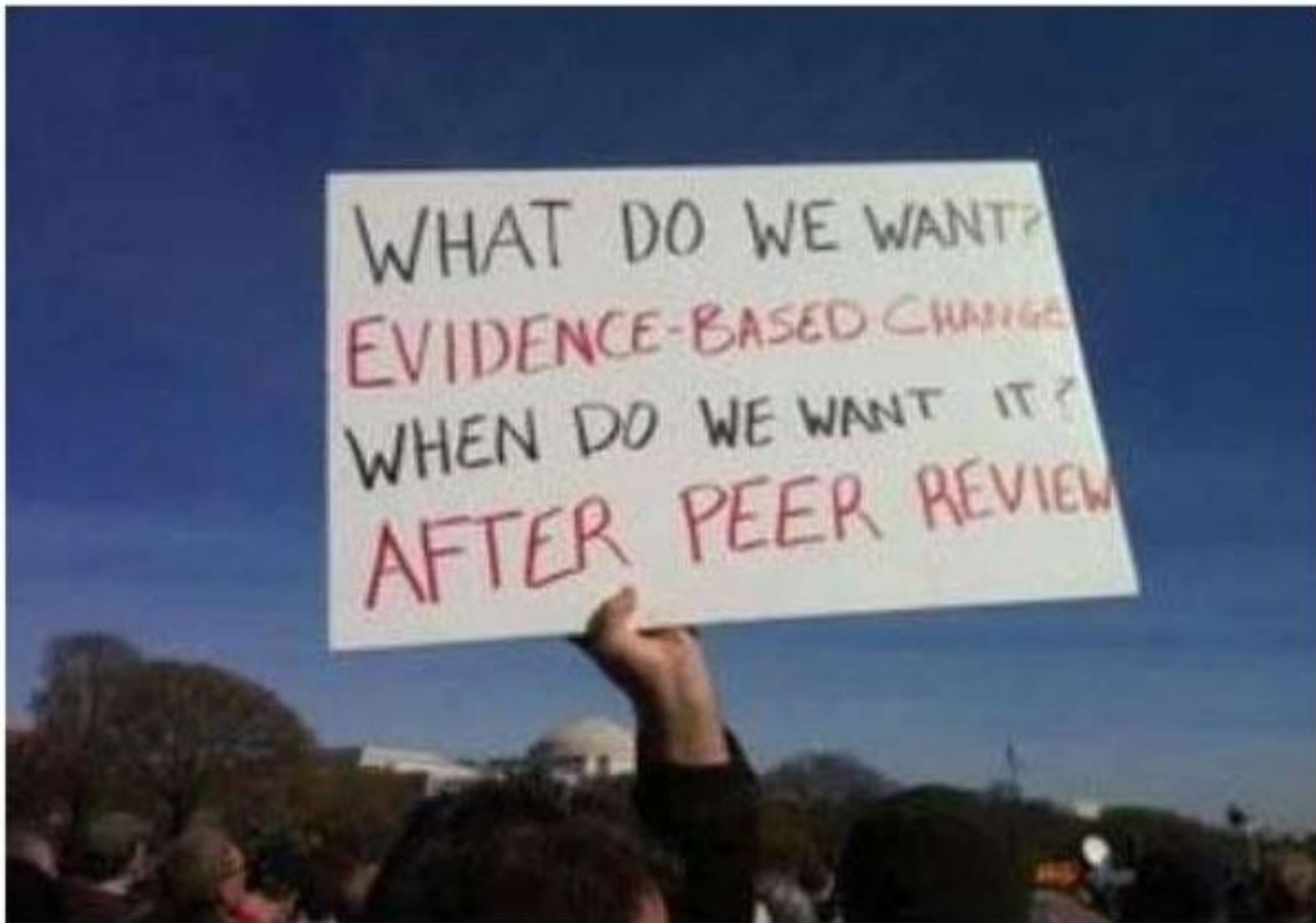
- Bedtime Reading – Midlothian, Edinburgh, Inverclyde, Perth & Kinross, Clackmannanshire
- Nursery Attendance – East Renfrewshire and North Lanarkshire
- Tea, Toast & Talk – East Lothian
- Homeless Support Families – Perth & Kinross
- Play@Home Resources – Numerous CPP's

Change starts with me



 #SHCR @HelenBevan

Source of image: jasonkeath.com



 #SHCR @HelenBevan

EARLY YEARS COLLABORATIVE / RAISING ATTAINMENT FOR ALL



What makes a difference

- Adopt an asset based approach with families.
- Work in partnership with families.
- Recognise that parents are the most important people in children's lives.
- Create a culture of high expectations.
- Welcome parents into early years settings.
- Listen to the parents and share experiences.
- Build relationships!!!

Talk to the person next to you

- What improvement work to improve family engagement would you like to see happen in your setting?
- What can you do to get this started?

You have:

- 2 minutes to think
- 3 minutes to tell your partner and write it down on a post-it note



COURAGE

Do one brave thing today... then run like hell.

Hamish Fraser
Improvement Advisor
Scottish Government
hamish.fraser@gov.scot



@hamishufraser
@eycollaborative
@EYArgyllBute