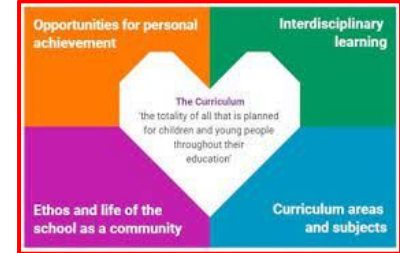


Lismore Primary School- The Rationale for Our Curriculum

The Curriculum for Excellence

Our Values

Respect
Equity
Compassion
Kindness
Honesty



Pupil Support

Review of learning and planning of next steps (Floor book/Targets/Reflections)
Gaining Access to learning activities which meet their needs (Open ended/Choice)
Planning for opportunities for personal Achievement
Preparing for changes and choices (inclusive strategies adopted)
Working with partners
Needs based/ Equitable approach to behaviour
Learning interventions in place where needed (e.g. toe by toe)
Technology used to support specific additional needs (e.g. Clicker 8 for dyslexia)

Experiences and Outcomes set out expectations for learning and development in:

Expressive Arts
Language and Literacy
Health and Wellbeing
Mathematics and Numeracy
Religious and Moral Education
Sciences
Social Studies
Technologies

Progression Frameworks) are used to monitor development through each of the curricular areas.

Principles for curriculum design:

Challenge and Enjoyment
Breadth
Progression
Depth
Personalisation and Choice
Coherence
Relevance



Community/Parent/Staff Consultation: What is important at Lismore Primary School?

Gaelic
Growing/Planting
Mainland Excursions (swimming etc.)
Music
Community Outreach (e.g. Mother and Toddler Groups/Pensioner Tea)
Highland/Country Dancing
Activities outwith School
Skills for life

Pupil Consultation: What is important at Lismore Primary School?

Floorbook Planning and Reflecting
Time Outdoors
Digital Skills
Treats/Rewards
Growing/Planting

